

FLAME BURN

Deep 2nd degree burn wound

Localisation left upper leg

Female

Age: 44 Years

Start Q.Light[®]: 04/05/2007

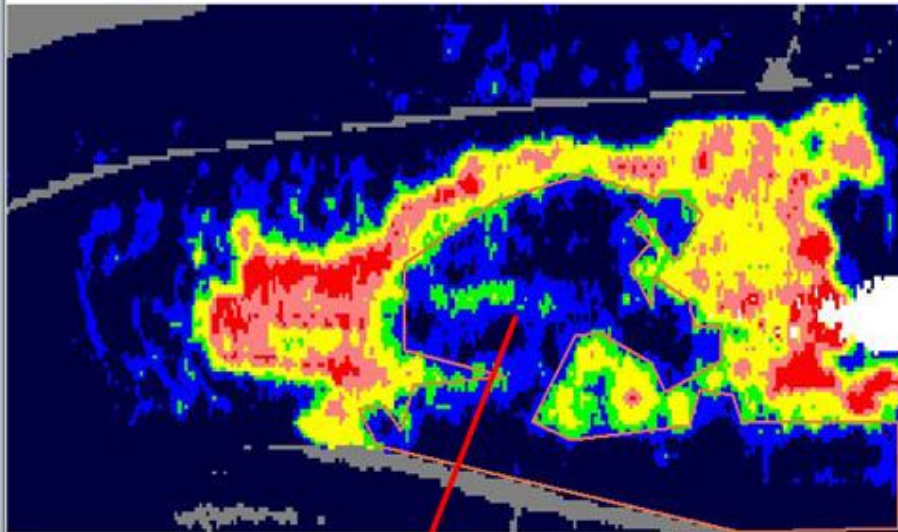
Full Closure: 03/06/2007

Total Treatment Time: 21 days

Treatment: 10 minutes daily



04/05/2007: 3 days post burn - Start Q.Light®



Partially full thickness burn

moorBDA
Palette



Cursor 195, 117 Blood flow (PU) 154 Intensity (AU) 78 Colour (RGB) 95:123:133 Background 28

RDI No	Mean	Valid [%]	Area
Poly 1	136.6	99.9%	109.68





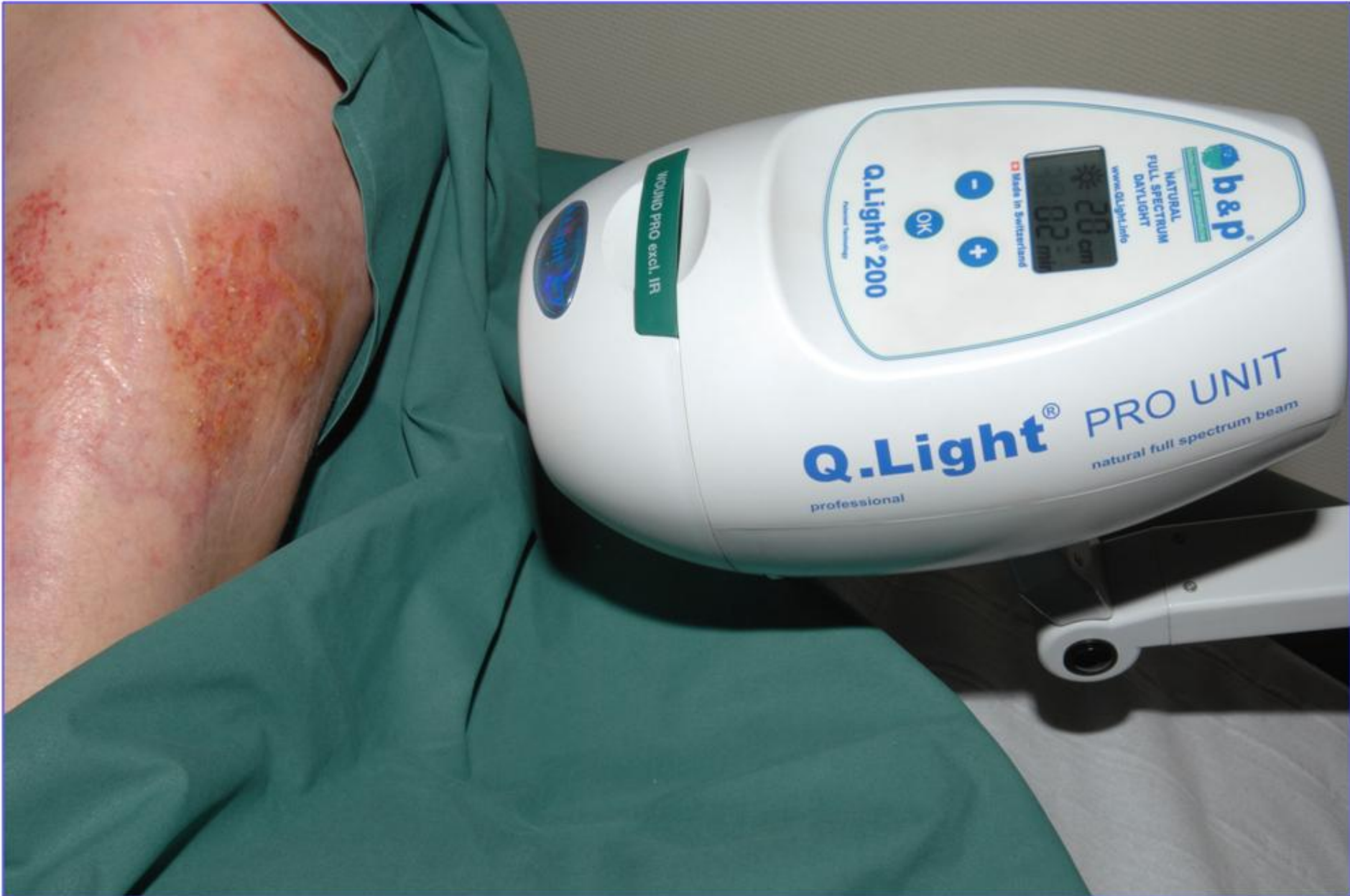
08/05/2007: 4 days Q.Light®



12/05/2007: 8 days Q.Light®



14/05/2007: 10 days Q.Light®



Dept of Plastic & Reconstructive Surgery / UZGent





29/05/2007: 25 days Q.Light®