

CHEMICAL BURN

Intermediate depth 2nd Degree burn

Location: Right Leg

Male

Age: 36 Years

Start Q.Light[®]: 20/10/2006

Full Closure: 17/11/2006

Total Treatment Time: 3 weeks

Treatment: 10 minutes daily

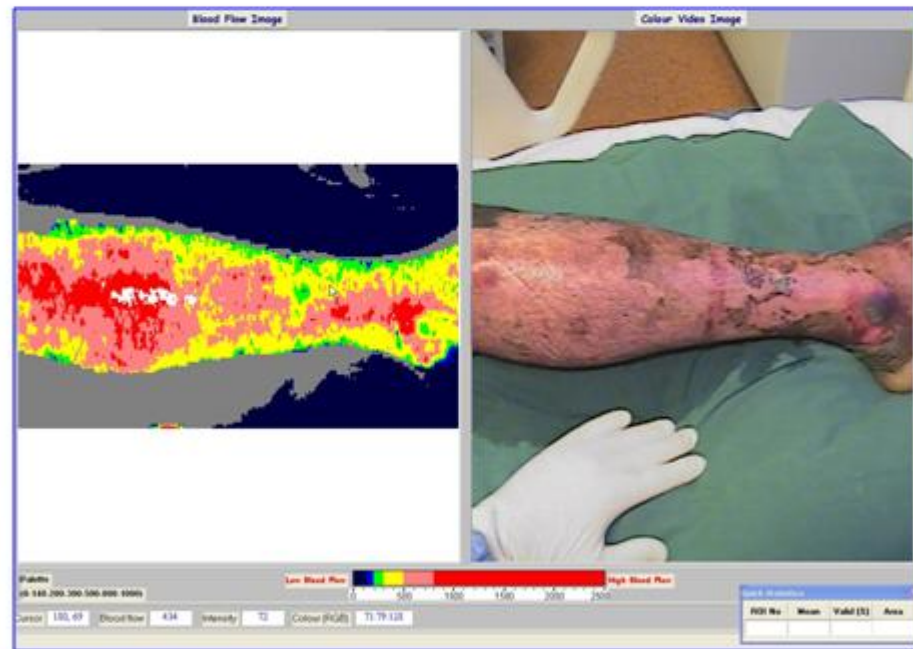
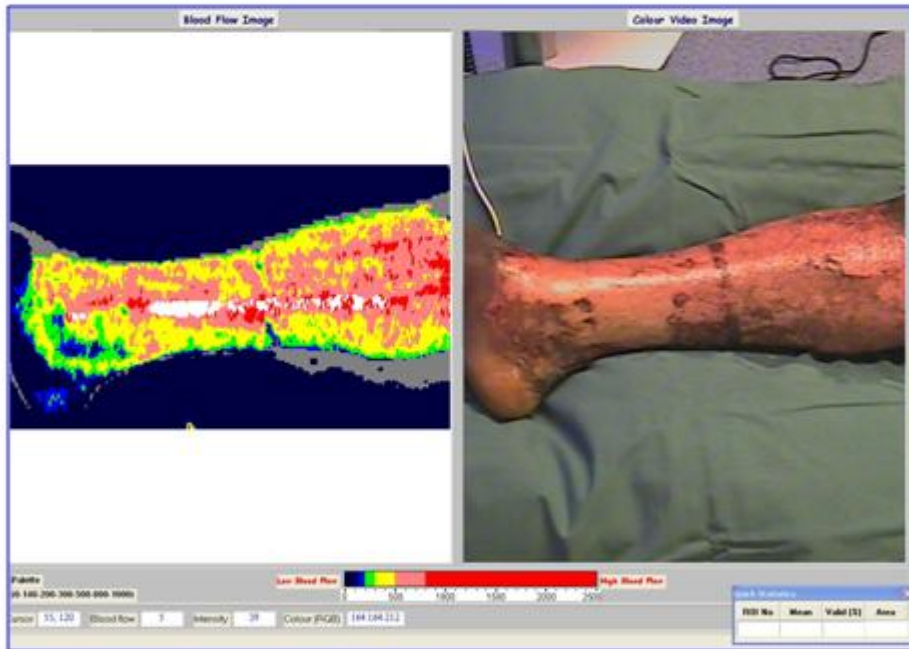
Chemical Burn



Q.LIGHT® Without Infrared

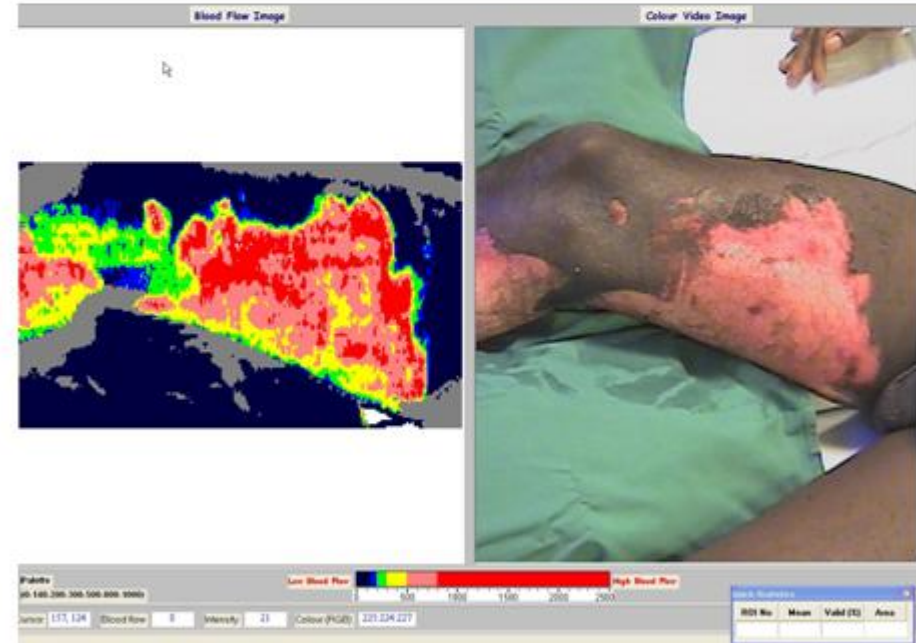
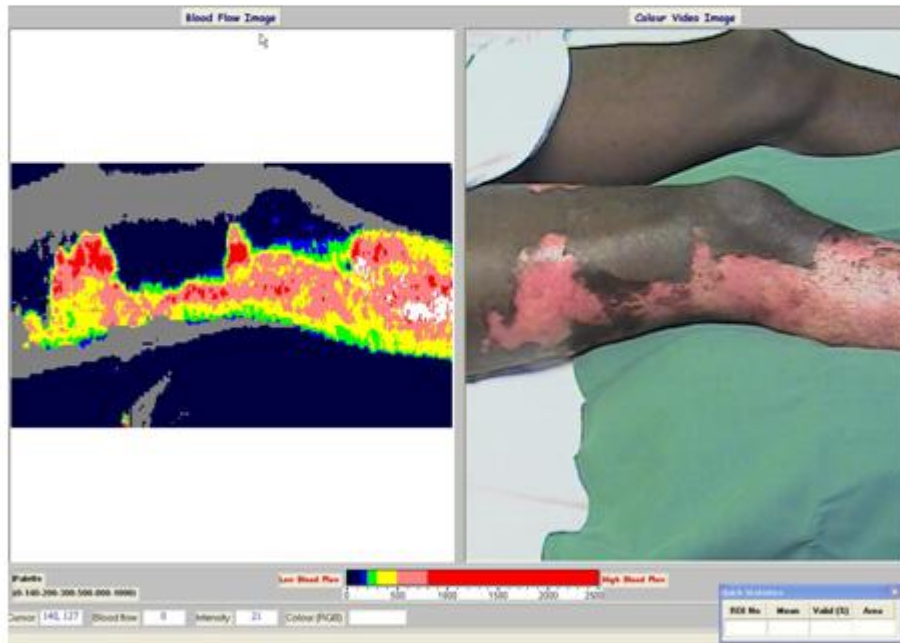


Laser Doppler Imaging



23/10/2006

Laser Doppler Imaging



23/10/2006







Q.LIGHT®



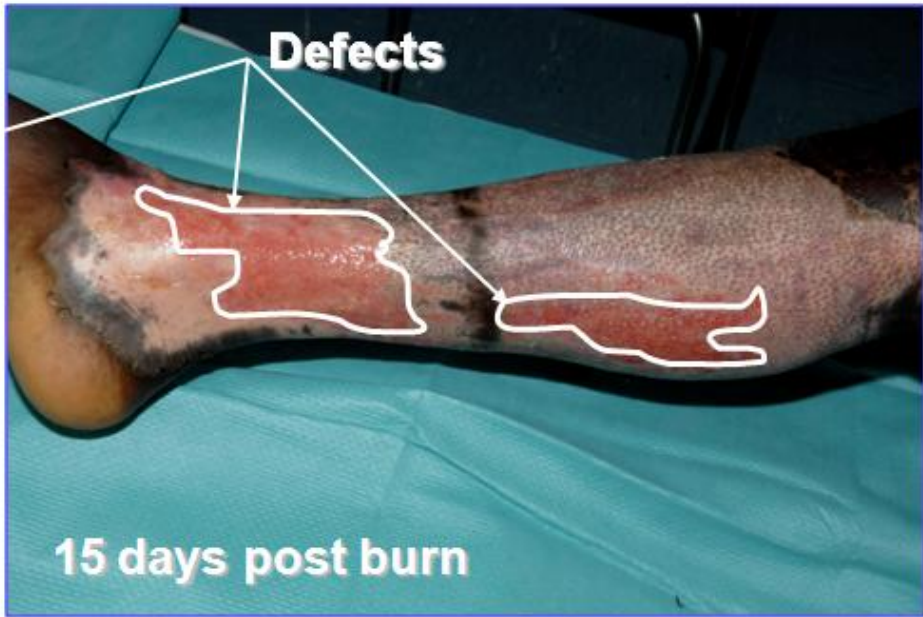
30 - 10 - 06: 10 days treatment

Q.LIGHT®



30 - 10 - 06: 10 days treatment







10 - 11 - 2006: 21 days post burn



10 - 11 - 2006: 21 days post burn



17 - 11 - 2006: 4 weeks post burn full closure



17 - 11 - 2006: 4 weeks post burn full Closure



23 - 03 - 2007: Follow Up 5 months



23 - 03 - 2007: Follow Up 5 months